

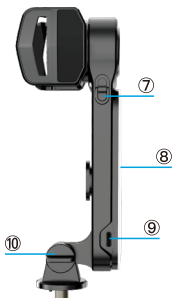
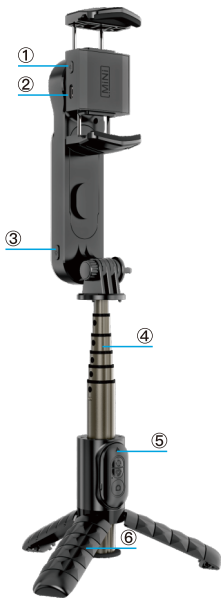
Selfie Stick

Gimbal Stabilizer Q09



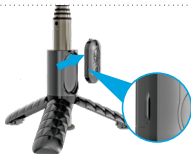
User Manual

Operation interface



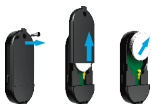
- ① Stabilizer power switch
- ② Stabilizer charging port
- ③ Light power/adjust button
- ④ Aluminum alloy tube
- ⑤ Wireless Remote
- ⑥ Tripod
- ⑦ Gimbal Unlock Key
- ⑧ Lamp
- ⑨ Lamp Charging Port
- ⑩ Manually tighten screws

Take out & Put in



Swipe up to
take out the remote.

How to replace the battery



Remove the screw
Slide the battery cover up,
You can replace the battery.

Open the Tripod



Open outwards at the
bottom of the handle
and become tripod mode.

How to connect

- 1. Switch on and off:** press and hold the camera button for 3s to switch on and off;
- 2. Wireless pairing:** The indicator light flashes for 4s to enter the pairing state, the pairing status indicator flashes, use the mobile phone to search for "**GIMBAL**" to match, and the indicator light goes out after the pairing is successful.
- 3. Camera button: Long press:** switch the machine;
Click: take pictures or videos (start/stop)
- 4. No pairing:** After power on, in the state of no pairing connection, it will automatically shut down if there is no operation for 5 mins.
- 5. Pairing:** After power on, when the Selfie is connected to the mobile phone, it will enter the sleep state without any operation for 10 mins, and it will automatically shut down after 10 mins of inactivity.
- 6. Power off:** In the power-on and sleep state, press and hold the camera button for 3s to shut down, and the indicator light will flash and turn off.

Fill light function



Operation of fill light

Long press: switch machine

Click: adjust the light mode and brightness

/Turn of the flash mode

Double press: turn on flash mode



Lighting mode:

White light: Soft, Medium, Bright;

Warm light: Soft, Medium, Bright;

Natural light: Soft, Medium, Bright.

Long press the power button, turn off the lights and remember.

Number of white lights: 16 Warm lights: 16

White light color temperature: 6500K Lumen: 46LM Power: 0.44W

Warm light color temperature: 3000K Lumen: 44LM Power: 0.44W

Mixed light color temperature: 4413K Lumen:64LM Power: 0.62W

Battery capacity: 600mAh

Power consumption: 0.5W

Operating voltage/output voltage: 3.7V

Operating current/output current: 0.16A

Charging voltage/input voltage: 5V

Charging current/input current: 450mA

Removable fill light



1



2

90°



3

180°



4



5



6

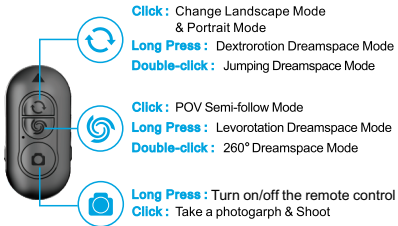
Take out the backlight from the selfie stick and rotate it 180° horizontal. Rotate 180° vertically and move it to the front of the selfie stick, Align with the hollow concave and convex groove on the selfie stick and install it (Picture 1)
Then move down and fix it.



Picture 1

Remote Control

Note: The phone's camera must be on the same side as the power button in order not to interfere with the shooting.



Note: Please refer to "Bluetooth Connection" for Bluetooth connection method.

REMINDER: If you need to download the app, you can scan the code on the long arm to download and unlock

DREAMSPACE MODE(UPSIDE-DOWN MODE)

Jumping Dreamspace Mode :

When the phone is landscape mode, levorotation 40°, dextrorotation 230°, levorotation 230°, dextrorotation 20° (back to the original position);

When the phone is portrait mode, dextrorotation 125°, levorotation 125° and 145°, dextrorotation 145° (back to its original position)

260° Dreamspace Mode (Left/Right):

When the phone is landscape mode, dextrorotation 50° to levorotation 310°, start shooting with a delay of 1s;

When the phone is portrait mode, levorotation 310° to dextrorotation 50°, start shooting with a delay of 1s.

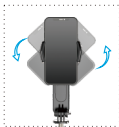
FUNCTION DISPLAY DIAGRAM



Landscape mode & Portrait mode



Semi-follow Mode

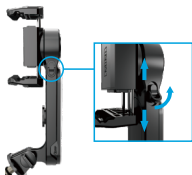


Dreamspace Mode

How to use the Gimbal

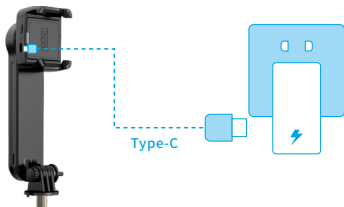


Clamp the phone and keep the natural balance. Long press the power button for 5 seconds to turn it on, and long press 3 seconds to turn it off.



Pull the ring of the manual lock outwards, Slide up to lock the gimbal as a selfie stick; (Note that the lock ring is pressed down and locked) Swipe down to unlock the gimbal as a stabilizer.

How to charge the Gimbal



When the gimbal battery is too low, there will be a red light flashing reminder. At this time, the Type-C charging cable should be used to charge. The red light is always on when charging, and the light is off when fully charged.

Specification

- Main Material:ABS+Aluminum alloy
- Mount Holder:37-90mm
- Folded Length:158.5mm
- Extended Length:700mm
- Product Size:158.5x75x61mm
- Product Weight:235g
- Battery:CR1632(replaceable)
- Gimbal Battery :500mAh
- Working voltage :3.7V
- Working current: Max1300mA
- Charging voltage: DC5V
- Charging current: 400mA

(Batteries must not be exposed to sunlight, fire or similar overheating)

REMIND

- Selfie Stick compatible with Android4.4 and above& iOS 5.1and above(if you change the system's "volume buttonfunction" under your phone's camera option,be sure to change it to default, or "take apicture" to make the selfie stick work)
- The clip must be held tightly when the phone is clamped.

- 1.Gimbal Stabilizer Mode:the best use in the 3 rods
- 2.Selfie Stick Mode:6 rods are recommended

Thank you for your support!